



Race smart.

# MoTeC Europe Ltd.

## RETAIL Price List - JULY 2010



### Engine Management, Data Acquisition, Power Distribution & Accessories

[www.motec.com](http://www.motec.com)



## CONTACT

**MoTeC (Europe) Ltd**  
Unit 14, Twyford Mill Ind. Est.  
Oxford Road  
Adderbury  
Oxon  
OX17 3SX

<b>PHONE</b>	<b>+44 (0) 8700 119100</b>
<b>FAX</b>	<b>+44 (0) 8700 111922</b>
<b>WEB</b>	<b>www.motec.com</b>
<b>EMAIL</b>	<b>sales@moteceurope.co.uk</b>

## TERMS & CONDITIONS

- All prices quoted are in Pounds Sterling and are exclusive of VAT
- Freight charges are additional or by prior arrangement
- All MoTeC products are guaranteed for 2 years. Third-party products carry the warranty of the original manufacturer
- Contact MoTeC for details of your nearest authorised dealer
- Telephone orders MUST be confirmed by fax, post, or email
- Product and company names are trademarks or trade names of their respective companies
- Goods returned for credit must be received within 7 days from date of invoice in as new condition and include all supplied accessories. A 10% re-stocking fee will be applied to all returns received after this period.
- P.O.A. = Price On Application; T.B.C. = To Be Confirmed; F.O.C. = Free Of Charge



Race smart.

# ***Retail Price List Contents***

**RETAIL**

**JULY 2010**

<b>Section</b>	<b>Page No.</b>
<b>2010 NEW PRODUCTS</b>	<b>4</b>
<b>Video Capture</b>	<b>5</b>
<b>Power Distribution</b>	<b>6</b>
<b>i2 Activation Codes</b>	<b>7</b>
<b>Data Acquisition &amp; Display</b>	<b>8 - 10</b>
<b>Telemetry &amp; GPS</b>	<b>11</b>
<b>Engine Management Systems</b>	<b>12 - 14</b>
<b>Plug-In Systems (OEM)</b>	<b>15</b>
<b>PWC Plug-In ECU Kits</b>	<b>16</b>
<b>ECU Accessories</b>	<b>17</b>
<b>Lambda Measurement</b>	<b>18</b>
<b>Fuel System Components</b>	<b>18</b>
<b>Ignition System Components</b>	<b>19</b>
<b>Communications Cables</b>	<b>20</b>
<b>Sensors</b>	<b>21-24</b>
<b>Wiring &amp; Connectors</b>	<b>25-29</b>
<b>Accessories</b>	<b>30</b>
<b>'Race smart.' Clothing</b>	<b>31</b>
<b>Training &amp; Support Services</b>	<b>31</b>
<b>Repairs, Testing &amp; Upgrades</b>	<b>31</b>

# 2010

All of these new products for 2010 are available now! See the appropriate page in this price list for more information and pricing. For more detailed specifications of these or any MoTeC products, visit [www.motec.com](http://www.motec.com)



VCS Video Capture Systems	5
i2 Activation Codes	7
SDL3 Sport Dash Logger	8
ADL3 Advanced Dash Logger	9
Plug In Jet Ski ECUs (PWC)	16
DHB Dual Half Bridge Controller	17
IGN 4 Quad Channel Ignition Amplifier	19
Motorcycle Quickshift Load Cell	23
Motorcycle Handlebar Switchgear	30





MoTeC's VCS Video Capture System is a professional quality integrated in-car camera, video recording and data overlay system. Designed, built and robustly housed to handle the harsh environments of motorsport the VCS records video and audio using the MPEG-2 video compression format at broadcast quality. Reliable and yet compact and lightweight it uses 12V vehicle power, so no recharging. Different analogue gauge sets can be recorded and displayed live on the video.

The CAN interface system enables easy connection to MoTeC and most other ECU's and Loggers to pick up data. Fast USB download and Video player software has fast playback and side by side comparison facility and DVD burning is fast and simple to use. The Video Capture System are supplied as a kit with either a 4 GB or a 16 GB memory and one or two cameras.

**VCS Pro Video Capture Systems**

	Part No.	Price
VCS Pro Video Single Camera System - 4G memory	18201	1995.00
VCS Pro Video Dual Camera System - 4G memory	18205	2245.00
VCS Pro Video Single Camera System - 16G memory	18204	2395.00
VCS Pro Video Dual Camera System - 16G memory	18206	2645.00

**Spares & Accessories**

	Part No.	Price
<b>Spare system components</b>		
VCS Pro Video Recorder unit - 4G	18201C	1795.00
VCS Camera with Bindex connector	18202	275.00
VCS Microphone with Bindex connector	18203	95.00
<b>Cables &amp; accessories</b>		
Cable Assembly - VCS Adaptor loom	61148	158.00
Cable Assembly - USB Mini B to USB A Male	61149	39.00
Loom - 5 pin Autosport - 4Metre	61154	130.00
VCS 16G Flash memory upgrade card	61159	400.00
VCS Roll Cage Mounting Kit	65076	97.00



The VCS is capable of recording the inputs from two cameras to provide picture - in - picture display and side by side comparison.

Videos recorded on the VCS can be synchronised for data/video post processing in MoTeC's renowned i2 Pro Analysis software.





MoTeC Power Distribution Modules (PDM) are designed to replace conventional relays, fuses and circuit breakers, simplifying wiring and reducing weight while increasing reliability. They not only provide electronically switched power to various systems in the vehicle, but can also provide full diagnostic information, including output currents and error status, enabling teams to monitor the entire vehicle via telemetry. New for 2009 are the PDM15 and PDM30 low cost variants.

**Power Distribution Modules**

	Part No.	Price
PDM16 Power Distribution Module	14102	1684.00
PDM32 Power Distribution Module	14100	2666.00
PDM15 Power Distribution Module	14104	1045.00
PDM30 Power Distribution Module	14103	1874.00

**PDM Connectors**

	Part No.	Price
<b>PDM15/30 Input/Output</b>		
PDM15/30 Connector Kit	95560	39.00
<b>PDM16/32 Input/Output</b>		
PDM16/32 8-way Connector (AS616-08SN)	68088	96.00
PDM16/32 26-way Connector (AS616-26SN)	68086	86.00
PDM32 37-way Connector (AS614-35SN)	68100	78.00

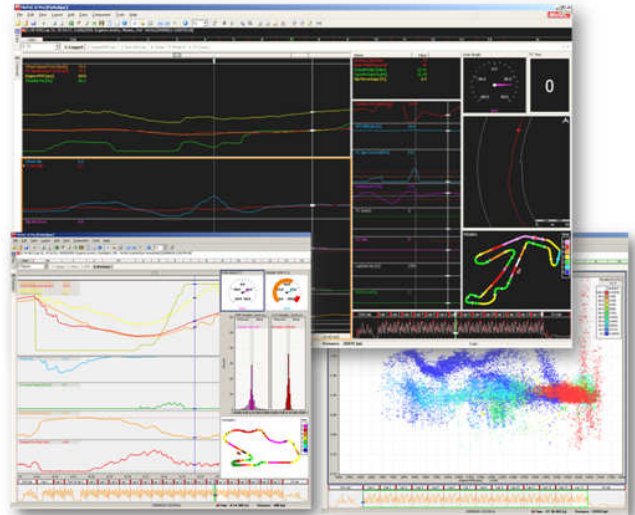
**PDM16/32 Battery+ Connector (ASHD614-1SN-C25)**

*We can supply the PDM Battery+ connector pre-crimped onto a 1m length of 25mm battery cable with either a straight boot, or two options of 90° boot depending on required cable orientation*

PDM Batt+ Connector, 1m cable, straight boot	68062	163.00
PDM Batt+ Connector, 1m cable, 90° boot "Left" orientation	68063	163.00
PDM Batt+ Connector, 1m cable, 90° boot "Right" orientation	68064	163.00

**PDM15/30 Battery Cable**

PDM15/30 1m Battery Cable with pre-crimped terminal	79143	28.00
-----------------------------------------------------	-------	-------



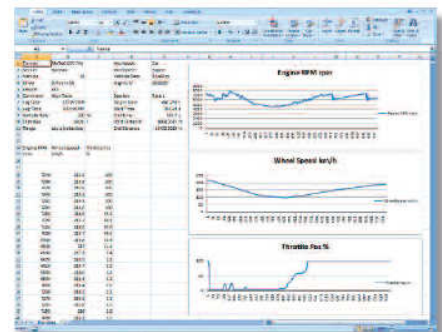
MoTeC's *i2 Pro* Data Analysis software now includes new Feature Licences that can be purchased to activate a particular feature on one physical computer for a nominated length of time. The first features released include Licences to analyse non-*i2 Pro* log files using *i2 Pro* and a Licence to manipulate log files via an API (Application Programming Interface).

**LICENCE TO OPEN MoTeC STANDARD LOG FILES**

- Allows individual PCs to open any MoTeC log file in *i2 Pro*
- Log files can be analysed using all *i2 Pro* features but will be saved in their original format
- Particularly useful for those that use *i2 Pro* software on one computer to analyse **Standard** and/or **Pro** log files from many MoTeC logging devices

**LICENCE TO IMPORT PI ASCII DATASET**

- Allows individual PCs to convert exported Pi ASCII files into *i2 Pro* files, via the *i2 Pro* File Conversion Wizard
- Ideal for MoTeC users who previously had a Pi logging system and would like to analyse this data in *i2 Pro* alongside their current data, or for existing Pi users to take advantage of *i2 Pro*'s extensive analysis features



**i2 API LICENCE**

- Provides access to and manipulation of MoTeC log files from tools such as MS Excel, MATLAB, Visual Basic and Visual C# for custom processing or external analysis of data generated in *i2 Pro*
- Enables the *i2* Application Programming Interface that can be used from any language that supports COM technology
- The functionality of the *i2* API software object includes:
  - Loading any MoTeC log file (.ld file)
  - Reading MoTeC log file data including channels, ranges, laps, beacons and details
  - Creating new *i2 Pro* log files and channels from code

**i2 Activation Codes & Licences**

	Part No.	Price
Open i2 Standard Files ( 1 Year )	22011	510.00
i2 API Licence ( 1 Year )	22021	2510.00
Import Pi ASCII Files ( 30 days )	22030	145.00
Import Pi ASCII Files ( 1 Year )	22031	1075.00



**SDL3 Sport Dash Logger**

Part No.

Price

The Sport Dash Logger (SDL3) is an upgraded replacement for the SDL2. New features include:

- Logging memory up to 120 MB
- Fast Ethernet download
- Greater processing power
- Logging of up to 500 samples per second
- Input expansion via E888 Expanders
- 2 more speed inputs than SDL
- Two separate CAN buses
- Internal 3-axis G sensor



*Mating connector not included*

**SDL3 Advanced Dash Logger**

The SDL3 comes standard as a combined display and powerful control device in one lightweight unit. With the addition of the Data Logging upgrade it can become a fully programmable data logger with a 16 or 120 MB memory. The optional backlit version has an inbuilt voltage inverter to power the LCD backlight. The ESDL3 Enclosed Dash Logger is supplied to the same base specification as the SDL3 providing 16 or 120 MB logging and control where a display is not required.

SDL3 Advanced Dash Logger	18017	1655.00
Backlit SDL3 Advanced Dash Logger	18018	1875.00
ESDL3 Enclosed Dash Logger (includes 16MB logging enable)	18019	2540.00
37 Pin Autosport SDL3 Connector (AS614-35SN)	68100	78.00

**SDL3 Upgrades**

Logging Enable (enables 16 MB logging memory)	29414	985.00
120 MB Logging Memory (upgrade from 16 MB to 120 MB)	29415	402.00
Pro Logging Advanced Analysis	29420	715.00

**SDL Upgrades**

Logging Enable (enables 8MB logging memory)	29214	782.00
Pro Logging Advanced Analysis	29220	505.00
Lambda Measurement Support	29202	183.00



**ADL2 Advanced Dash Logger**

Part No.

Price

ADL2 Non Backlit Dash – Very limited stock left	18006	3214.00
-------------------------------------------------	-------	---------

**ADL2 Upgrades**

16MByte Logging Memory (upgrade from 8MB to 16MB)	29115	200.00
Extension to 50 Input/Outputs	29101	585.00
Pro Logging Advanced Analysis	29120	655.00
Telemetry Support	29121	655.00
Remote Logging (requires telemetry upgrade)	29122	725.00
Lambda Measurement Support	29102	275.00







Race smart.



# Data Acquisition & Display

RETAIL

JULY 2010

## ADL3 Advanced Dash Logger

Part No.

Price

The Advanced Dash Logger (ADL3) is a powerful replacement for the ADL2. New features include:

- Logging memory up to 250MB
- Fast Ethernet download
- Logging of up to 1000 samples per second
- Input expansion via E8xx Expanders or VIMs
- 2 more AV inputs than ADL2
- Two separate CAN buses
- Internal 3-axis G sensor



Mating connector not included

## ADL3 Advanced Dash Logger

The ADL3 is supplied as a standard dash logger with 16MB logging memory. The optional backlit version has an inbuilt voltage inverter to power the LCD backlight. The EDL3 Enclosed Dash Logger is supplied to the same base specification as the ADL3 providing 16MB logging and control where an integral display is not required



### ADL3 Advanced Dash Logger

18014

3950.00

### Backlit ADL3 Advanced Dash Logger

18015

4321.00

### EDL3 Enclosed Dash Logger

18016

3881.00

### 79 Pin Autosport ADL3 Connector (AS620-35SN)

68080

105.00

## ADL3 Upgrades

### 250MByte Logging Memory (upgrade from 16MB to 250MB)

29315

525.00

### Extension to 52 Input/Outputs

29301

635.00

### Pro Logging Advanced Analysis

29320

735.00

### Telemetry Support

29321

655.00

### Remote Logging (requires telemetry upgrade)

29322

725.00

## Central Logging System

Part No.

Price

The MoTeC Central Logging System has been developed as the ultimate acquisition tool for those that place high demands on their data system. This system consists of an ACL (Advanced Central Logger) plus multiple VIMs (Versatile Input Modules). Mating Connectors not included

## ACL Advanced Central Logger

### ACL Advanced Central Logger (inc. 1GB card, pro analysis, and Ethernet comms lead)

18105

4200.00

### 22 Pin Autosport ACL Connector (AS612-35SN)

68087

65.00

## ACL Upgrades

### Telemetry Support

25021

706.00

### Remote Logging (requires telemetry upgrade)

25022

783.00

## VIM Versatile Input Module

### VIM Versatile Input Module

18110

1440.00

### 5 Pin Autosport VIM CAN/Power Connector (ASL606-05SN)

68098

29.00

### 55 Pin Autosport VIM Sensor Connector (AS616-35SN)

68090

81.00





Race smart.



## Data Acquisition & Display

RETAIL

JULY 2010

### MDD Mini Digital Display

Part No.

Price

The MDD is a remote LCD Display for use as a satellite display for all ECUs or loggers. The unit is also available as an uncased OEM unit to allow integration into your own design of steering wheel. The MDD Input Kit is available as an add-on to the standard MDD and includes an extra loom to allow buttons and switches to be wired directly to the MDD for transmission via the CAN bus.

MDD Mini Digital Display

18011

855.00

MDD OEM (uncased MDD for steering wheel integration)

18012

795.00

MDD Input Kit (loom and new backplate. MDD not included)

61115

102.00

### MDD Steering Wheel

The MDD is also available integrated into a steering wheel assembly, complete with buttons and shift lights. The wheel has been used in a variety of single seater and sportscar applications, including numerous Le Mans cars and an IndyCar. The wheel is also available with an integrated SLM Shift Light Module. Please contact us to discuss your requirements. (Please Note: Units are made to order)

MDD Steering Wheel

79400

from  
2995.00

### Lap Timing

Part No.

Price

MoTeC BTX Beacon Transmitter

15500

370.00

MoTeC BR2 Beacon Receiver

15512

350.00

### Beacon Accessories

5 Pin Autosport BR2 Connector (ASL606-05SN)

68098

29.00

BR2 Configuration Loom (for programming advanced features)

61048

78.00

Replacement BTX Power Lead

61033

26.00

### Expansion Modules

Part No.

Price

These CAN-based Expansion modules provide extra inputs and outputs when connected to a logger or ECU. The E888 features 8 AV inputs and 8 thermocouple inputs with inbuilt amplifiers, whereas the E816 has 16 AV inputs. Both feature extra digital inputs, and 8 outputs.

E888 Expander Module (supplied with plastic connectors)

14007

767.00

E816 Expander Module (connector not supplied)

14008

842.00

66 Pin Autosport E816 Connector (AS618-35SN)

68089

101.00

### Accessories

Part No.

Price

#### VSM Video Sync Module

Allows auto sync of video footage and logged data when used with an SDL, ADL2 or ADL3.

VSM Video Sync Module

61122

71.00

#### STC Serial to CAN Converter

Provides conversion of serial data to CAN format, allowing serial devices to be connected to an SDL/ADL2/ADL3/ACL via the CAN bus. Baud Rate settings should be confirmed at time of order

STC Serial to CAN Converter

61125

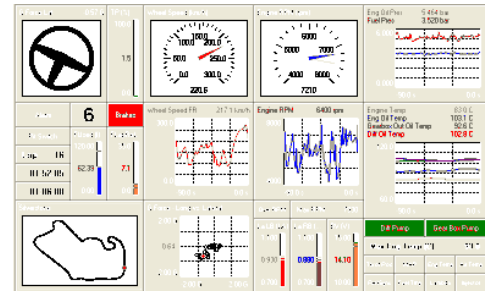
175.00

www.motec.com

**Radio Telemetry**

MoTeC Europe offer several options of telemetry kit depending on the requirements of the user, so please contact us to discuss the most suitable kit for your application, or if you require spare parts for an existing kit.

Please note your ADL2, ADL3, ACL, or ECU must be enabled for telemetry to operate with the Radio Telemetry kits. If not already enabled, you will need to add the cost of this to the telemetry kit prices



**NOTE: It is the user's responsibility to ensure the system conforms to local legislation at every circuit, and that all relevant radio licences have been organised. Required frequency and channel spacing/bandwidth should be quoted at the time of order.**

	Part No.	Price
Basic Telemetry Kit (1W radios)	79100	2709.00
10W Telemetry Kit (10W radio for car, 1W radio for pit)	79200	3145.00
Diversity Reception Telemetry Kit (10W radios, 2 pit antennae)	79300	4045.00

**GPS Units**

GPS Units allow vehicle position, speed, and heading data to be sent to a MoTeC logging device, which can then be used for the drawing of track maps and analysis of driving lines in the i2 analysis software. GPS units can also be used for Lap Timing instead of an infrared beacon, when used in conjunction with an SDL, ADL2, ADL3, or ACL. **Note: we do not recommend the Budget 5 HZ GPS unit for use in applications where high levels of vibration are likely to be experienced.**

**Budget range - 5Hz GPS**

The GPS-G1 is a 5Hz GPS that is suitable for less demanding motorsport applications and other applications such as PWC installations and comprises a GPS unit with an inbuilt antenna.



5Hz GPS-G1 GPS Unit	41300	320.00
---------------------	-------	--------

**Professional 10Hz / 20Hz GPS**

The Professional GPS unit consists of a base unit in a professional aluminium case with Autosport connector, and a separate antenna. The units are available with update rates of 10Hz or 20Hz, and can be specified to transmit GPS data either via RS232 or via CAN through an integral MoTeC STC. Update rate and inclusion of STC should be decided before ordering. **Mating connector not included**



Pro 10Hz GPS (RS232 comms only)	41303	640.00
Pro 20Hz GPS (RS232 comms only)	41304	998.00
Pro 10Hz GPS with integral STC (capable of CAN or RS232)	79113	850.00
Pro 20Hz GPS with integral STC (capable of CAN or RS232)	79114	1208.00

**Accessories**

13 Pin Autosport Professional GPS Connector (AS610-35SA)	68010	59.00
Spare GPS Antenna for Professional Unit	41305	72.00



Race smart.

# Engine Management Systems

RETAIL

JULY 2010

## M4 ECU

Part No.

Price

The M4 features four injector drivers, and the M4 Pro has the Advanced Tuning and Data Logging option as standard. **Includes mating connector**

MoTeC M4-3DFIS ECU (3D Fuel/Ignition/Sequential)

10002

749.00

MoTeC M4-PRO 3DFISA ECU (Advanced & Logging)

10003

999.00

### M4 ECU Upgrades

M4 Advanced & Logging Upgrade

26004

250.00

M4 Logging Only Upgrade (512kB)

26005

170.00

M4 Lambda Upgrade (requires advanced & logging upgrade)

26006

200.00

M4 Telemetry Upgrade

26008

475.00

M4 Remote Logging Upgrade (requires telemetry upgrade)

26009

475.00



## M48 ECU

Part No.

Price

The M48 features eight injector drivers, and the M48 Pro has the Advanced Tuning and Data Logging option as standard. **Includes mating connector**

MoTeC M48-3DFIS ECU (3D Fuel/Ignition/Sequential)

11002

1228.00

MoTeC M48-PRO 3DFISA ECU (Advanced & Logging)

11003

1491.00

### M48 ECU Upgrades

M48 Advanced & Logging Upgrade

27004

263.00

M48 Logging Only Upgrade (512kB)

27005

178.00

M48 Lambda Upgrade (requires advanced & logging upgrade)

27006

210.00

M48 Telemetry Upgrade

27008

499.00

M48 Remote Logging Upgrade (requires telemetry upgrade)

27009

499.00



## MLS & M2R ECUs

Part No.

Price

The MLS and M2R ECUs are derived from the M4 ECU, and are customised for more specific applications. **Includes mating connector**

MLS ECU (for Chevrolet LS1 and Lexus 1UZFE V8 Engines)

10005

840.00

M2R ECU (dedicated to 2 rotor engines)

10006

840.00

### MLS ECU Upgrades

MLS Advanced & Logging

26014

278.00

MLS Logging Only Upgrade (512kB)

26015

178.00

MLS Lambda Upgrade (requires advanced & logging upgrade)

26016

210.00

### M2R ECU Upgrades

M2R Advanced & Logging

26024

278.00

M2R Logging Only Upgrade (512kB)

26025

178.00

M2R Lambda Upgrade (requires advanced & logging upgrade)

26026

210.00



**M400 ECU**

**Part No.**

**Price**

The M400 offers four injector drivers and four ignition outputs, and is a fully programmable management system ideal for engines up to four cylinders with sequential injection and multi-coil ignition. It is also well suited to twin rotary applications. Eight auxiliary outputs provide control for aftermarket devices and systems providing functions such as 3D boost control, nitrous injection, intercooler spray bars, idle speed, shift lights, warning alarms and many more. **Includes mating connectors**



<b>M400 ECU</b>	<b>13040</b>	<b>1717.00</b>
-----------------	--------------	----------------

**M400 ECU Upgrades**

<b>M400 Advanced Functions Upgrade (allows anti-lag, traction and launch control, full throttle upshift, pit speed limiting, etc)</b>	<b>24105</b>	<b>295.00</b>
<b>M400 Logging Only Upgrade (512kB)</b>	<b>24101</b>	<b>121.00</b>
<b>M400 Lambda Upgrade</b>	<b>24102</b>	<b>394.00</b>
<b>M400 Drive by Wire (contact us for supported applications)</b>	<b>24112</b>	<b>262.00</b>
<b>M400 Camshaft Control (contact us for supported applications)</b>	<b>24116</b>	<b>236.00</b>
<b>M400 Over Run Boost</b>	<b>24117</b>	<b>179.00</b>
<b>M400 Pro Analysis</b>	<b>24104</b>	<b>557.00</b>

**M600 ECU**

**Part No.**

**Price**

The M600 offers six injector drivers and six ignition outputs, and is a fully programmable management system ideal for engines up to six cylinders with sequential injection and multi-coil ignition. It is also well suited to triple rotary applications. Eight auxiliary outputs provide control for aftermarket devices and systems providing functions such as 3D boost control, nitrous injection, intercooler spray bars, idle speed, shift lights, warning alarms and many more. **Includes mating connectors**



<b>M600 ECU</b>	<b>13060</b>	<b>1885.00</b>
-----------------	--------------	----------------

**M600 ECU Upgrades**

<b>M600 Advanced Functions Upgrade (allows anti-lag, traction and launch control, full throttle upshift, pit speed limiting, etc)</b>	<b>26105</b>	<b>295.00</b>
<b>M600 Logging Only Upgrade (512kB)</b>	<b>26101</b>	<b>121.00</b>
<b>M600 Lambda Upgrade</b>	<b>26102</b>	<b>394.00</b>
<b>M600 Dual Lambda Upgrade (requires single lambda upgrade)</b>	<b>26103</b>	<b>189.00</b>
<b>M600 Drive by Wire (contact us for supported applications)</b>	<b>26112</b>	<b>262.00</b>
<b>M600 Camshaft Control (contact us for supported applications)</b>	<b>26116</b>	<b>236.00</b>
<b>M600 Over Run Boost</b>	<b>26117</b>	<b>179.00</b>
<b>M600 Pro Analysis</b>	<b>26104</b>	<b>557.00</b>



Race smart.

## Engine Management Systems

RETAIL

JULY 2010

### M800 & M880 ECUs

Part No.

Price

The **M800** offers eight injector drivers (with twelve as an option) and six ignition outputs, and is a fully programmable management system ideal for engines up to twelve cylinders with sequential injection and multi-coil ignition. **Includes mating connectors**



The **M880** has the same facilities as the M800 but includes the Advanced Functions Upgrade, Single Lambda, 1MB Logging Memory, Autosport Connector & option to expand to 4MB logging memory. **Mating connector not included**

**M800 ECU Standard Tuning**

13001

2095.00

**M880 Professional**

13002

3472.00

**66 Pin Autosport M880 Connector (AS618-35SN)**

68089

101.00

### M800 & M880 ECU Upgrades

Part No.

Price

**M800 Advanced Functions Upgrade (allows anti-lag, traction and launch control, full throttle upshift, pit speed limiting, etc)**

28105

295.00

**1Mb Logging Memory (M800 only)**

28101

179.00

**4Mb Logging Memory (M880 only)**

28108

404.00

**Pro Logging Advanced Analysis**

28104

557.00

**Single Lambda Support**

28102

394.00

**Dual Lambda Support (requires single lambda upgrade)**

28103

189.00

**Telemetry Support**

28107

520.00

**Remote Logging Upgrade (requires telemetry upgrade)**

28109

520.00

**10/12 Cylinder Sequential Support**

28111

289.00

**Drive by Wire (contact us for supported applications)**

28112

262.00

**Multi-Pulse Injection and Multi-Spark Ignition**

28115

168.00

**Servo Motor & Stepper Motor Drive**

28113

168.00

**Camshaft Control (contact us for supported applications)**

28116

236.00

**M800 Over Run Boost**

28117

179.00

## M1 Series ECUs

*There comes a time to make a change...*

*For more than twenty years a distinctive gold box has embodied the MoTeC brand of ECU. Instantly recognised, Internationally respected.*

*The M800 MoTeC's benchmark model raised the bar in aftermarket engine management worldwide.*

*Now MoTeC takes engine control into a new era with the M1 Magnesium Series.*

*Coming Soon...Check out the website for up to date details.*



[www.motec.com](http://www.motec.com)

The **M800 OEM** is designed as a Plug-In ECU for Mitsubishi and Subaru applications and is based on the M800 ECU. The Plug-In ECU is designed to use the vehicle's existing wiring, with no need to remove or add sensors. Customised with OEM connectors, these replacement boards eliminate the need for adaptor looms, and fit straight into the factory ECU box. The M800 OEM has all the facilities of the M800 except it can only drive low current type Fuel Injectors. **Now including** the Plug-In ECU for the Mitsubishi EVO X



The **Diff Controllers** offers direct replacements for Mitsubishi and Subaru driver-controlled centre differentials, allowing a number of user-defined configurations to determine the operating characteristics of the centre differential. **Now included** the MDC2 Diff Controller for the Mitsubishi EVO X

<b>Mitsubishi</b>	<b>Part No.</b>	<b>Price</b>
<b>M800 OEM Plug-In ECUs</b>		
<i>NOTE: EVO 9 versions require the addition of part 28116 cam control upgrade</i>		
Mitsubishi EVO 4-8 (4 plug)	13009A	1650.00
Mitsubishi EVO 4-8 AL (inc. anti-lag without adv. functions)	13009AL	1820.00
Mitsubishi EVO 8/9 (3 plug, for EVO 8 MR/GSR and EVO 9)	13010A	1650.00
Mitsubishi EVO 8/9 AL (inc. anti-lag w/o advanced functions)	13010AL	1820.00
Mitsubishi EVO 9 cam control upgrade	28116	236.00
Mitsubishi EVO X RS (inc cam control and DBW. Needs MDC2)	13013A	2200.00
<b>Diff Controllers</b>		
MDC Mitsubishi Diff Controller (EVO 7,8 and 9)	14012	898.00
MDC2 Mitsubishi Diff Controller (EVO X RS)	14016	898.00
<b>Subaru</b>	<b>Part No.</b>	<b>Price</b>
<b>M800 OEM Plug-In ECUs</b>		
<i>NOTE: Subaru STi versions require the addition of part 28116 cam control upgrade</i>		
Subaru Version 5-6	13004A	1650.00
Subaru Version 5-6 AL (inc. anti-lag without adv. functions)	13004AL	1820.00
Subaru Version 7/8 (WRX, UK/Jap/USA versions)	13008A	1650.00
Subaru Version 7/8 AL (inc. anti-lag without adv. functions)	13008AL	1820.00
Subaru Version 9/10 (includes cam and DBW)	13012A	2125.00
Subaru STi Cam Control Upgrade	28116	236.00
<b>Diff Controllers</b>		
MoTeC SDC1 Subaru Diff Controller (WRX STi 2003)	14009	898.00
MoTeC SDC2 Subaru Diff Controller (2004/5/6 models)	14010	898.00
MoTeC SDC3 Subaru Diff Controller (2008 models)	14015	898.00

**MoTeC**

Race smart.

**PWC Plug-In ECU Kits****RETAIL****JULY 2010**

MoTeC PWC Plug-In ECU kits are fully programmable, direct replacements for factory ECUs on a select number of popular PWC models, based around the M400M Marine ECU. The system can be purchased as a kit complete with an adaptor wiring loom, mounting brackets and DBW upgrade where required. PWC Plug-In kits are convenient and cost effective to install because they eliminate the need to rewire the PWC. They simply plug into the factory wiring harness using the original sensors and fuel system. Alternatively the parts can be bought individually.



YAMAHA



KAWASAKI



SEA-DOO



HYDROSPACE

**PWC Models**

PWC Models	Part No.	Price
M400 PWC Kit for YAMAHA FX-SHO, FZS/FZR	13041	1995.00
M400 PWC Kit for KAWASAKI ULTRA 250X, 260X	13042	1995.00
M400 PWC Kit for SEA-DOO RXP, RXP-X, RXT	13043	1995.00
M400 PWC Kit for HYDROSPACE S4	13044	1995.00

**Accessories**

Wiring Adaptor Kit for Yamaha FX-SHO, FZS/FZR	61143	560.00
Wiring Adaptor Kit for Kawasaki Ultra 250X, 260X	61151	923.00
Wiring Adaptor Kit for SEA-DOO RXP, RXP-X, RXT	61157	960.00
Wiring Adaptor Kit for HYDROSPACE S4	61160	745.00
Wiring Loom only for Yamaha FX-SHO, FZS/FZR	61142	400.00
Wiring Loom only for Kawasaki Ultra 250X, 260X	61144	370.00
Wiring Loom only for SEA-DOO RXP, RXP-X, RXT	61155	450.00
Wiring Loom only for HYDROSPACE S4	61166	450.00
Marine M400 ECU	13040M	1680.00
Yamaha Injector YP 725cc	34016	135.00
Yamaha Injector Connector Kit Uskar	34017	11.00
Yamaha Adaptor Top 11mm for YP Injector	34018	16.00

[www.motec.com](http://www.motec.com)





Race smart.



# ECU Accessories

RETAIL

JULY 2010

## ECU Accessories

Part No.

Price

*ECU Accessories include a mating connector unless otherwise stated*

Ignition Expander	14001	268.00
AS Connector Ignition Expander (needs connector 68087)	14006	373.00
Traction Control Multiplexer	14002	268.00
AS Connector TC Multiplexer (needs connector 68087)	14005	373.00
Pierburg Boost Control Valve (includes connector)	58004	121.00
3 Port Boost Control Valve	58020	94.00
M4/M48 SUU Software Update Unit	63008	107.00

## ECU Accessory Connectors

22 Pin Autosport IEX/TCMux Connector (AS612-35SN)	68087	65.00
---------------------------------------------------	-------	-------

## DBW-4 Drive By Wire Module

Part No.

Price

*The DBW-4 works with M400/M600/M800/M880 ECUs running firmware V3.30T and later, and provides 4 PID Controllers for drive by wire control, or generic PID control for servo motors. The use of a DBW-4 does not require a DBW upgrade in your ECU. Mating connector not included*

MoTeC DBW-4	14011	815.00
66 Pin Autosport DBW-4 Connector (AS618-35SN)	68089	101.00

## Knock Monitoring and Control

Part No.

Price

*Knock Modules work with vehicle knock sensors to provide individual cylinder closed loop knock control, allowing tuners to safely optimise high performance ignition maps. There is a standalone module and a version specifically designed to mount onto an M800 Plug-In ECU. A competent tuner needs to carry out a frequency analysis to determine the target frequency and knock module settings. This is highly specialised work.*

**MoTeC Knock Modules will only be available through authorised dealers that have undertaken specific training**

OKM Onboard Knock Module (for M800 P&P ECUs)	53115	695.00
Mitsubishi EVO X OKM Onboard Knock Module	53121	695.00
SKM Standalone Knock Module	53116	995.00
Knock Sensor Loom (for use with SKM)	61114	252.00

## DHB Dual Half Bridge

Part No.

Price

*The DHB is a high current amplifier which allows low current auxiliary outputs to drive high current loads such as motors. It contains two high current half bridge outputs, and connects to any auxiliary output of a MoTeC ECU or Dash Logger, which performs the control function, such as PWM speed control, direction control or servo control. Mating connectors not included*

DHB Dual Half Bridge (needs connectors 68050, 79121, and 79125 — see page 24)	41213	235.00
-------------------------------------------------------------------------------	-------	--------



Race smart.



Lower Price!

## Lambda Measurement

RETAIL

JULY 2010

### LTC Lambda To CAN Module

Part No.

Price

MoTeC's LTC (Lambda to CAN) modules monitor, control and diagnose Bosch LSU 4.9 Lambda sensors, transmitting readings on a CAN bus. When multiple LTCs are used, up to 32 Lambda sensors can be configured on a single CAN bus, allowing a CAN-enabled ECU or logging device to simultaneously monitor numerous Lambda sensors. The LTC is also available as a dual version LTCD to work with two sensors into one module



LTC Lambda to CAN Module

61300

418.00

LTC Dual Lambda to CAN Module

61301

609.00

### PLM Professional Lambda Meter

Part No.

Price

PLM Professional Lambda Meter with LSU Sensor and Loom

15003

995.00

PLM Professional Lambda Meter with NTK Sensor and Loom

15002

1322.00

PLM Professional Lambda Meter only

15004

895.00

Standard 2.6m PLM Loom (available individually as a spare)

61038

103.00

6m Bosch PLM Loom

61040

137.00

PLM NTK Adaptor Loom

61105

57.00

### Lambda Sensors & Accessories

Part No.

Price

Bosch Wide Band Lambda Sensor (LS11 for M4/M48/M8)

57001

171.00

Bosch LSU 4.0 Lambda Sensor (for M800 series and PLM)

57003

113.00

Bosch LSU 4.9 Lambda Sensor (for M800 series, PLM, LTC)

57006

143.00

NTK Lambda Sensor (for M800 series and PLM)

57007

180.00

Stainless Steel Weld-on Boss Including Bung

59002

21.00

Bosch LSU 4.0 Connector

64006

19.00

Bosch LSU 4.9 Connector

64010

16.00

M800 OEM Lambda Adaptor (300mm from OEM to DTM plug)

61044

36.00

M800 OEM LSU 4.0 Adaptor (3m from DTM to LSU 4.0 plug)

61050

44.00

M800 OEM LSU 4.9 Adaptor (2m from DTM to LSU 4.9 plug)

61051

44.00

## Fuel System Components

### Fuel Injectors

Part No.

Price

Bosch Electronic Injector 351/363 (556cc/min. @ 2.5bar)

34363

118.00

Bosch Electronic Injector 803 (523cc/min. @ 5bar)

34803

113.00

Bosch Electronic Injector 737 (439cc/min. @ 5bar)

34737

107.00

Bosch Electronic Injector 403 (382cc/min. @ 5bar)

34403

132.00

Bosch Electronic Injector 007

34007

112.00

Injector Fitting Kits

34100

5.00

www.motec.com

## CDI Capacitive Discharge Ignition

Part No.

Price

The **CDI/4** can be used as an ignition driver from an ECU to drive up to 4 individual high energy CDI coils. **Mating connector included**

The **CDI/8** can be used as an ignition driver from an ECU to drive up to 8 individual high energy CDI coils or can be used with external sensors as a stand-alone system. As a stand-alone unit it can be programmed from a PC running on its own dedicated sensors. **Mating connector not included**



MoTeC CDI/4 (for use with an ECU)	41003	746.00
MoTeC CDI/8	14004	1367.00
26 Pin Autosport CDI/8 Connector (AS616-26SN)	68086	89.00
1000Hz Single Channel CDI Module (for use with an ECU)	41013	370.00
650Hz Dual Channel CDI Module (for use with an ECU)	41005	527.00

## Ignition Coils & Amplifiers

Part No.

Price

### Ignition Coils

Single Coil	42001	40.00
Denso Single Coil (built-in amplifier, includes connector)	42012	98.00
Bosch Single Coil	42014	45.00
Bosch 4 Cylinder Coil Pack (wasted spark)	42025	105.00
CDI Coil (PS92)	42020	134.00
CDI Coil (wasted spark)	42021	50.00
Bosch 6 Cylinder Coil Pack (wasted spark)	42022	63.00
Single Mercury CDI Coil	42011	62.00
Single CDI Coil	42030	131.00
Bosch HT Coil Connections	46001	3.00
Bosch HT Coil Covers	46002	3.00

### Ignition Amplifiers

IGN4 - Compact Quad Channel Ignition Amplifier (Please contact us before ordering)	41212	225.00
Single Channel Ignition Amplifier	41124	103.00
Single Channel Ignition Amplifier (with tacho. output)	41008	120.00
Dual Channel Ignition Amplifier	41200	134.00
Triple Channel Ignition Amplifier	41203	158.00
Triple Channel Ignition Amplifier (dual connector)	41205	170.00
Quad Channel Ignition Amplifier (dual connector)	41204	225.00
Ignition Combiner (provides a tacho output — refer to MoTeC drawing A10)	53110	70.00





Race smart.



# Communications Cables

RETAIL

JULY 2010

## CAN Communications

Part No.

Price

CAN is used for laptop communications with M400/M600/M800/M880, SDC1/SDC2/MDC, old-style ADL8, BR2, and the new PDM16 and PDM32. The CAN cable connects to a PC parallel port, whereas the UTC allows CAN communication via a USB port.

UTC USB to CAN Converter	61059	160.00
CAN Communications Cable	61021	150.00
CAN Cable and UTC Loom Connector (in line)	65038	11.00
CAN Cable and UTC Loom Connector (panel mount)	65030	12.00
CAR Cable (vehicle loom CAN interface)	61022	57.00
M800 OEM CAN Adaptor (also for SDC1/SDC2)	61046	36.00
BR2 Configuration Loom	61048	78.00

## USB Communications

Part No.

Price

USB is used for laptop communications with the SDL and ADL2/EDL2.

USB Cable Terminated in Autosport Sockets (1m)	61067	29.00
USB Cable Terminated in Autosport Sockets (1.8m)	61068	32.00
2m USB Cable	79140	10.00
USB Bulkhead Connector and Cap	90100	16.00

## Ethernet Communications

Part No.

Price

Ethernet is used for laptop communications with ADL3, EDL3, SDL3, ESDL3 and ACL. We now supply a Bulkhead Ethernet cable terminated with Autosport sockets..

ACL Ethernet Communications Cable	61112	86.00
Ethernet RJ45 Bulkhead to Autosport Sockets 1.8M <i>NOTE: You will also need a standard RJ45 cable to work with this product</i>	61132	46.00



## Serial Communications

Part No.

Price

A serial connection is used for laptop communications with M4, M48, M8 ECUs, and the PLM,

2m PCI Cable (M48, M8 and early M4)	63003	105.00
6m PCI Cable (M48, M8 and early M4)	63004	120.00
RS232 Comms Cable (M4e and PLM)	61070	11.00
CIM Kit (ECU to SDL/ADL/ADL2 Interface for M4, M48, M8)	61027	168.00
D9 Adaptor (for use with PCI cable on M4 <3000, M48, M8 )	61010	34.00
D9 – 232 Adaptor (M4 only)	61016	27.00
D9 Adaptor (Mitsubishi/Subaru for M48 OEM conversion)	61012/3	40.00
D9 Mil Spec Adaptor (for mil spec M4, M48, and M8 ECU)	61011	115.00
USB to Serial Adaptor	90099	45.00

*Need a connector fitted? See page 24 for details of our Sensor Termination Service*

## Speed Sensors

**Part No.**
**Price**

*Speed sensors are used to measure cam and crank position, or wheel speed. Hall Effect sensors provide an open collector output, suitable for REF/SYNC and digital inputs on ECUs, and digital or speed inputs on Dash Loggers. Inductive sensors output a voltage waveform due to a changing magnetic field, and are suitable for use on REF/SYNC inputs on ECUs, and speed inputs on Dash Loggers. **Note: sensor 57116 not recommended for crank or cam position sensing***

### Hall Effect Sensors

<b>GT101 (19mm plastic body)</b>	<b>57101</b>	<b>61.00</b>
<b>Miniature Vane Sensor (plastic body)</b>	<b>57109</b>	<b>62.00</b>
<b>Threaded Hall Probe (M12x1, 36mm stainless steel body)</b>	<b>57111</b>	<b>82.00</b>

### Inductive Sensors

<b>Inductive Probe (7/16 x 20tpi threaded steel body)</b>	<b>57114</b>	<b>103.00</b>
<b>Magnet for Sensor 57114</b>	<b>57115</b>	<b>21.00</b>
<b>Magneti Marelli SEN 8D Sensor</b>	<b>57104</b>	<b>57.00</b>

### Magnetic to Hall Speed Sensor Conversion

*The DMC-D converts signals from two magnetic speed sensors into 'Hall Effect' signals, suitable for digital inputs. The DMC-D is housed in a 12-way DTM male connector, so requires a 12-way DTM female connector (not supplied) for a wiring loom interface.*

<b>DMC-D Dual Magnetic Converter</b>	<b>53118</b>	<b>58.00</b>
<b>12 Way Female DTM Connector Kit for DMC-D</b>	<b>68060</b>	<b>14.00</b>

### Magneto Resistive Speed Sensor Conversion

*The Magneto Resistive converter allows the signals from magneto resistive speed sensors to be used in digital inputs of ECUs and Dash Loggers. Please call us to discuss your application and sensor part numbers in more detail*

<b>Magneto Resistive Speed Sensor Adaptor</b>	<b>79135</b>	<b>58.00</b>
-----------------------------------------------	--------------	--------------

## Pitot Tubes

**Part No.**
**Price**

*Pitot Tubes are used for air speed measurement, which gives a reference speed when analysing aerodynamic performance data. The assembly supplied by MoTeC Europe includes a pitot tube and attached differential pressure sensor. The sensor is calibrated and logged as a pressure difference, which is then converted into an air speed value in i2 Pro using a maths function. **Note: lead time on Pitot Tubes is normally 3-4 weeks from time of order***

<b>130mm Pitot Tube Assembly</b>	<b>25mbar (up to ~230km/h)</b>	<b>53204</b>	<b>550.00</b>
	<b>50mbar (up to ~330km/h)</b>	<b>53205</b>	<b>550.00</b>
	<b>70mbar (up to ~390km/h)</b>	<b>53206</b>	<b>550.00</b>
<b>300mm Pitot Tube Assembly</b>	<b>25mbar (up to ~230km/h)</b>	<b>53207</b>	<b>650.00</b>
	<b>50mbar (up to ~330km/h)</b>	<b>53208</b>	<b>650.00</b>
	<b>70mbar (up to ~390km/h)</b>	<b>53209</b>	<b>650.00</b>

<b>Temperature Sensors</b>	<b>Part No.</b>	<b>Price</b>
<b>Variable Resistance</b>		
Delco Air Temperature (3/8 NPT)	54001	42.00
Bosch Air Temperature (M12x1.5)	54002	29.00
Air Temperature with Fly Lead (M10x1)	54003	65.00
Air Temperature with Fly Lead (M12x1.5)	54005	67.00
Bosch -40 to 150°C Fluid Temperature (M12x1.5)	55002	24.00
Bosch -40 to 150°C Fluid Temperature (M10x1)	55003	40.00
-30 to 150°C Fluid Temperature with Fly Lead (M12x1.5)	55005	60.00
-30 to 150°C Fluid Temperature with Fly Lead (M10x1)	55004	58.00
Delco Air Temperature Sensor Connector Kit	64001	10.00
Bosch 2 Pin Female Connector Kit	65008	6.00
<b>Thermocouples</b>		
<i>K type thermocouples are often used to measure exhaust temp. If used with an ECU or Dash Logger, an Amplifier is required. If used with an E888 or VIM, the amplifier is not required.</i>		
MoTeC Thermocouple Amplifier	58008	111.00
K type Thermocouple Kit (150mm probe length)	58005	61.00
K type Thermocouple Kit (75mm probe length)	58009	61.00
1/8NPT Thermocouple Stainless Steel Fitting and Gland Nut	58012	18.00
K type Sensor Female Socket	58017	6.00
K type Sensor Male Plug	65048	7.00
EGT Temperature Sensor (R1000)	58053	120.00
<b>Non-Contact Infra Red</b>		
<i>Infra Red sensors allow non-contact temperature measurement, and are often used for tyre or brake temperature monitoring.</i>		
0 - 150°C Infra Red Sensor (plastic body) (very limited stock)	52003	105.00
0 - 150°C Infra Red Sensor (aluminium body)	52009	179.00
0 - 1200°C Infra Red Sensor (best for carbon brakes)	52005	336.00
0 - 1000°C Infra Red Sensor (best for steel brakes)	52006	336.00
<b>Manifold Pressure Sensors (Absolute)</b>		
<b>Part No.</b>		
<b>Price</b>		
1bar High Accuracy Delco MAP Sensor (connector supplied)	53000	95.00
1bar Delco MAP Sensor (connector supplied)	53001	57.00
3bar Delco MAP Sensor (connector supplied)	53003	86.00
<i>These 4bar sensors feature a 3/8"UNF (-03) fitting.</i>		
4bar Standard Sensor (integral connector, with mating half)	58060	116.00
4bar Professional Sensor (flylead connection)	58040	147.00





Race smart.

# Sensors

RETAIL

JULY 2010

Need a connector fitted? See page 24 for details of our Sensor Termination Service

Fluid Pressure Sensors (Gauge)	Part No.	Price
<i>5 and 10 bar sensors are for Fuel and Oil Pressure, with 170 bar sensors used for Brake Pressure</i>		
<b>Basic VDO Sensors - 1/8" NPT Fitting</b>		
5bar VDO Sensor (screw terminals)	58002	63.00
10bar VDO Sensor (screw terminals)	58003	63.00
<b>Standard Sensors - 3/8" NPT (-03) Fitting</b>		
10bar Standard Sensor (integral connector, with mating half)	58061	116.00
170bar Standard Sensor (integral connector, with mating half)	58062	116.00
<b>Professional Sensors - 3/8" NPT (-03) Fitting</b>		
5bar Professional Sensor (flylead connection)	58041	147.00
10bar Professional Sensor (flylead connection)	58042	147.00
170bar Professional Sensor (flylead connection)	58043	147.00
<b>Motion Sensors</b>		
	<b>Part No.</b>	<b>Price</b>
±4G Single Axis G Sensor (ECU)	57202	234.00
±4G Dual Axis G Sensor (ECU and ADL2)	57210	328.00
±4G Triple Axis G Sensor (ECU)	57203	447.00
±4G Single Axis G Sensor (ADL2)	57205	234.00
±4G Triple Axis G Sensor (ADL2)	57206	447.00
100°/s Single Axis Gyro	79130	530.00
150°/s Single Axis Gyro	79131	530.00
<b>Strain Gauges</b>		
	<b>Part No.</b>	<b>Price</b>
<i>Gearshift load cells are used for flat shift functions, and we can supply kits for sequential or H-pattern gearboxes providing an amplified 0-5V output. We can also supply amplifiers for existing strain gauges. Note that strain gauge products are made to order so are subject to a lead time.</i>		
Sequential Gearshift Load Cell Kit	95004	604.00
H-Pattern Gearshift Load Cell Kit	95005	604.00
Strain Gauge Amplifier	95007	262.00
Motorcycle Quickshift Loadcell	79104	300.00
<b>Rotary Position Sensors</b>		
	<b>Part No.</b>	<b>Price</b>
<i>Rotary potentiometers are used for measurement of parameters such as Throttle Position, Steering Angle, and Gear Barrel Position in sequential transmissions.</i>		
Standard D-drive Throttle Position Sensor (right hand, black)	56001	116.00
Standard D-drive Throttle Position Sensor (left hand, white)	56002	116.00
100° Sprung Shaft Potentiometer	59008	116.00
350° Sprung Shaft Potentiometer	59013	116.00
Multi Turn Steering Angle Kit (10 turn pot, 2 gears, and belt)	59006	131.00



*Need a connector fitted? See page 24 for details of our Sensor Termination Service*

**Linear Position Sensors**

**Part No.**

**Price**

*Linear potentiometers are mainly used for measuring damper or suspension movement, but can be used in a variety of other applications, such as throttle pedal position measurement.*

<b>50mm Linear Potentiometer</b>	<b>57152</b>	<b>156.00</b>
<b>75mm Linear Potentiometer</b>	<b>57153</b>	<b>168.00</b>
<b>100mm Linear Potentiometer</b>	<b>57156</b>	<b>179.00</b>
<b>150mm Linear Potentiometer</b>	<b>57155</b>	<b>189.00</b>
<b>200mm Linear Potentiometer</b>	<b>57158</b>	<b>200.00</b>
<b>75mm Slimline Linear Pot (Pop Joint) - Rear Suspension</b>	<b>79160</b>	<b>168.00</b>
<b>150mm Slimline Linear Pot (Pop Joint) - Front Suspension</b>	<b>79161</b>	<b>189.00</b>



**Ride Height Sensors**

**Part No.**

**Price**

*Ultrasonic Ride Height Sensors allow detailed analysis on cars featuring significant aerodynamic performance. The sensors are available in a variety of measurement ranges, with two different levels of voltage output, depending on the type of input used on the data acquisition system. These sensors have been successfully used in single-seater and Le Mans Prototype, applications. Sensor supplied fitted with AS connector. Please contact us to discuss your requirements*

<b>0-5V (suitable for hi-res ADL2 AV inputs)</b>	<b>150mm Range</b>	<b>79315</b>	<b>498.00</b>
	<b>200mm Range</b>	<b>79316</b>	<b>498.00</b>
	<b>250mm Range</b>	<b>79317</b>	<b>498.00</b>
<b>0-10V (suitable for normal ADL2 AV inputs)</b>	<b>150mm Range</b>	<b>79318</b>	<b>498.00</b>
	<b>200mm Range</b>	<b>79319</b>	<b>498.00</b>
	<b>250mm Range</b>	<b>79320</b>	<b>498.00</b>

**Sensor Termination Service**

**Part No.**

**Price**

*MoTeC generally supplies sensors with an unterminated fly lead so that you can choose which connector to fit, to match existing loom connectors, or budgetary constraints. However we now offer a termination service, to fit either a DTM or Autosport connector. In each case the sensor fly lead is covered with Raychem DR25 heatshrink, and the connector has a heatshrink boot for added protection. Default specifications are outlined below, however please contact us to specify alternative lead lengths, pinouts, or connector specifications*

**Autosport Connector Fitting**

*Default fitting of 5-pin AS male connector (ASL606-05PN), with lead length of 300mm from sensor body to back face of connector. Alternative AS keyways are available on request.*

Pin 1	Ground
Pin 2	Signal
Pin 3	Power
Pin 4	N/C
Pin 5	N/C



**Autosport Connector Fitting**

**78001**

**75.00**

**DTM Connector Fitting**

*Default fitting of 3-pin DTM male connector (DTM04-3P), with lead length of 300mm from sensor body to back face of connector.*

Pin 1	Ground
Pin 2	Signal
Pin 3	Power



**DTM Connector Fitting**

**78002**

**50.00**



**Wiring Looms****Part No.****Price****Adaptor Looms**

*If you require an adaptor loom as an interface between any of our M4/M48 or M400/M600/M800 / M880 ecu's and a particular vehicle we have most of the requisite circuit pin out drawings and components in stock.*

*Once we know the details of your vehicle and specific requirements we can recommend a choice of authorised specialist wiring manufactures from within our network who would be able to quote for and supply an adaptor loom to suit your application.*

**Unterminated Looms**

M4 Cut-to-Fit Loom (2.5m unterminated)	61001	150.00
M48 Cut-to-Fit Loom (2.5m unterminated)	61002	150.00
M8 Cut-to-Fit Loom (2.5m unterminated)	61003	150.00
M400, M600 & M800 Cut-to-Fit Loom (2.5m unterminated)	61004	275.00
M880 Cut-to-Fit Loom (2.5m unterminated)	61005	P.O.A.
ADL Cut-to-Fit Loom (3m unterminated)	61020	325.00
ADL2 Cut-to-Fit Loom with USB (3m unterminated)	61099	350.00
ADL3 Cut-to-Fit Loom (3m unterminated)	61213	395.00
SDL Cut-to-Fit Loom (3m unterminated)	61023	300.00

**ECU Connectors****Part No.****Price**

36 Way MoTeC M4/M48/M8 Connector	65036	32.00
18 Way MoTeC M8/IEX/TCMux/CDI/4 Connector	65018	27.00
34 Way MoTeC M400/M600/M800/E888 Connector	65044	21.00
26 Way MoTeC M400/M600/M800/E888 Connector	65045	20.00
M800 Series Connector Kit	95560	39.00
Mitsubishi/Subaru ECU Connectors (16,22 & 26 way)	69012,3,4	6.00

**ECU Connector Spare Pins**

M800 Spares Pins	65546	0.16ea
M4/M48/M8/IEX/TCM Spare Pins	65024	0.17ea
Seals for M4/M48/M8/IEX/TCMux Pins	65025	0.15ea



Race smart.

# Wiring & Connectors

RETAIL

JULY 2010

All kits contain shell, contacts, and seals. Male/Female descriptions refer to the pin type, not the connector or housing shape.

## Military Connectors

	Part No.	Price
55 Way M8 Mil Spec ECU Connector	68078	100.00
32 Pin M4/M48 Mil Spec ECU Connector	68079	79.00
10 Pin to D9 Comms Plug Connector (M8, mil spec M4/M48)	68077	53.00

## Autosport (AS) Connectors

### Autosport AS Connectors

	Part No.	Price
13 way Autosport GPS Connector (AS610-35SA)	68010	59.00
79 way Autosport ADL2 Connector (AS620-35SN)	68080	110.00
26 way Autosport PDM/CDI8 Connector (AS616-26SN)	68086	86.00
22 way Autosport ACL/TCMux/IEX Connector (AS612-35SN)	68087	65.00
8 way Autosport PDM16/32 Connector (AS616-08SN)	68088	96.00
66 way Autosport M880/E816/DBW4 Connector (AS618-35SN)	68089	101.00
55 way Autosport VIM Sensor Connector (AS616-35SN)	68090	81.00
37 way Autosport SDL/PDM Connector (AS614-35SN)	68100	78.00
AS Connector Sockets for MoTeC Product Connectors	68082	0.65ea
AS Connector Filler Plugs	68083	0.59ea

### Autosport ASL Connectors

5 way ASL BR2/VIM Connector (ASL606-05SN)	68098	30.00
5 way Female ASL Connector (ASL106-05SN)	68102	32.00
5 way Male ASL Connector (ASL606-05PN)	68103	30.00
5 way ASL Ethernet Loom Connector (ASL106-05PN)	79102	25.00
5 way Flanged ASL Ethernet Loom Connector(ASL006-05PN)	79103	30.00
ASL Connector Sockets	68068	3.00ea
ASL Connector Pins	68069	2.00ea

### Autosport ASU Connectors

3 way Female Autosport (ASU103-03SN)	65120	39.00
3 way Male Autosport (ASU603-03PN)	65121	35.00
ASU Connector Pins	68074	3.00ea
ASU Connector Sockets	68075	4.00ea

## Pressure Sensor Connectors

	Part No.	Price
Delco 1 Bar MAP Sensor Connector	64002	10.00
Delco 3 Bar MAP Sensor Connector	64003	10.00
Standard Pressure Sensor Spare Connector	65013	12.00





Race smart.



# Wiring & Connectors

RETAIL

JULY 2010

## Bosch Connectors

Part No. Price

2 Way Male Kit	65007	6.00
2 Way Female Kit	65008	6.00
3 Way Female Kit	65012	6.00
4 Way Female Kit	65140	7.00
5 Way Female Kit	65142	8.00
6 Way Female Kit	65144	11.00
7 Way Female Kit	65010	13.00

## DTM Connectors

Part No. Price

2 Way Female Kit	68050	5.00
2 Way Male Kit	68051	5.00
3 Way Female Kit	68052	6.00
3 Way Male Kit	68053	6.00
4 Way Female Kit	68054	7.00
4 Way Male Kit	68055	7.00
6 Way Female Kit	68056	8.00
6 Way Male Kit	68057	8.00
8 Way Female Kit	68058	10.00
8 Way Male Kit	68059	10.00
12 Way Female Kit	68060	16.00
12 Way Male Kit	68061	16.00

## DTP Connectors (for DHB)

Part No. Price

2 Way Female Kit	79125	8.00
2 Way Male Kit	79121	8.00

## AMP Connectors

Part No. Price

1 Way Female Kit	65216	3.00
1 Way Male Kit	65215	3.00
2 Way Female Kit	65201	3.00
2 Way Male Kit	65200	3.00
3 Way Female Kit	65203	3.00
3 Way Male Kit	65202	3.00
4 Way Female Kit	65205	4.00
4 Way Male Kit	65204	4.00
5 Way Female Kit	65207	5.00
5 Way Male Kit	65206	5.00
6 Way Female Kit	65209	6.00
6 Way Male Kit	65208	6.00



Race smart.

# Wiring & Connectors

RETAIL

JULY 2010

Cable			Price
<b>Raychem Type 44 Cable</b>			
	22g	20g	
Black	90111	69999	1.00/m
White	90101	70004	1.00/m
Yellow	90102	70005	1.00/m
Green	90103	70007	1.00/m
Red	90104	70000	1.00/m
Blue	90105	70006	1.00/m
Pink	90106	70010	1.00/m
Brown	90107	70008	1.00/m
Orange	90108	70009	1.00/m
Grey	90109	70011	1.00/m
Violet	90110	70012	1.00/m
<b>Special Cable</b>			
3 Core Cable (22g with PTFE sleeving)		81003	8.00/m
High Temperature Ethernet Cable (for PC Comms)		79350	17.00/m
<b>Heatshrink</b>		<b>Part No.</b>	<b>Price</b>
<b>Heatshrink</b>			
3.2mm diameter		62003	1.35/m
4.8mm diameter		62004	1.55/m
6.4mm diameter		62005	1.65/m
9.5mm diameter		62006	2.25/m
12.7mm diameter		62007	2.50/m
19.0mm diameter		62008	3.65/m
<b>Adhesive-Lined Heatshrink</b>			
3.2mm diameter		62020	5.50/m
6.4mm diameter		62022	7.50/m
12.7mm diameter		62024	10.00/m
19.0mm diameter		62025	12.00/m
<b>Raychem DR25 Heatshrink</b>			
1/8" diameter (3.2mm)		92003	4.20/m
3/16" diameter (4.8mm)		92004	6.00/m
1/4" diameter (6.4mm)		92005	6.15/m
1/2" diameter (12.7mm)		92006	7.45/m
3/4" diameter (19.0mm)		92007	11.40/m



Race smart.

# Wiring & Connectors

RETAIL

JULY 2010

Heatshrink Boots	Part No.	Price
<b>Raychem Heatshrink Boots for MoTeC Products</b>		
202K163-25 Boot (ADL2)	65108	14.00
202K153-25 Boot (M880, E816, DBW4, VIM)	65109	12.00
202K142-25 Boot (SDL, ACL, IEX, TCM)	65110	11.00
202K121-25 Heatshrink Boot	65107	9.00
222K163-25 90 deg Boot (ADL2)	65111	17.00
222K152-25 90 deg Boot (M880, E816, DBW4, VIM)	65112	14.00
222K142-25 90 deg Boot (SDL, ACL, IEX, TCM)	65113	13.00
222K121-25 90 deg Heatshrink Boot	65114	11.00
<b>Heatshrink Boots for Sensors</b>		
202A111-25 Boot for ASL Connector	65105	7.00
202A111-25/225 Pre-glued Boot for ASL Connector	65106	8.00
222A111-25 90 deg Boot for ASL Connector	65115	11.00
Hellermann 1030-4-G Boot for ASL Connector	65122	6.00
Hellermann 1030-4-GW24 Pre-glued Boot for ASL Connector	65116	8.00
Hellermann 1181-4-G 90 deg Boot for ASL Connector	65117	10.00
204W221-25 Boot for ASU Connector	65118	7.00
204W221-25/225 Pre-glued Boot for ASU Connector	65101	7.00
224W221-25 90 deg Boot for ASU Connector	65119	9.00
<b>Protective Sleeving</b>		
<i>Heat sleeving to protect wiring from extremes of temperature near exhausts or turbos, providing continuous protection up to 200°C, and able to withstand momentary peaks of 350°C .</i>		
5mm diameter Heat Sleeving	92100	9.00/m
10mm diameter Heat Sleeving	92101	13.00/m
<b>Wiring Tools</b>		
<b>Crimping &amp; Stripping</b>		
MoTeC Military Crimp Tool ( <i>fits all MoTeC mil type pins</i> )	68073	247.00
Packard Crimp Tool	67022	228.00
M800 Crimp Tool	67024	285.00
Universal Wire Stripper	90018	24.00
<b>De-Pinning</b>		
Autosport 22g De-Pinning Tool ( <i>plastic</i> )	90003	2.00
Autosport 20g De-Pinning Tool ( <i>plastic</i> )	90005	3.00
Autosport 16g De-Pinning Tool ( <i>plastic</i> )	90006	5.00
Delco De-Pinning Tool ( <i>metal</i> )	68001	58.00

**Buttons & Switches**

	Part No.	Price
Illuminated 12mm Momentary Button	67100	15.00
Illuminated 12mm Latching Button	67101	15.00
Illuminated 8mm Momentary Button	67102	13.00
Illuminated 8mm Latching Button	67103	13.00
Lenses for 12mm Button ( <i>blue, green, red, yellow</i> )	67506/7/8/9	4.25
Lenses for 8mm Button ( <i>green, red, yellow</i> )	67513/4/5	1.50
Lamps and LEDs for 12mm & 8mm Buttons	67501	1.50
19mm Push Buttons ( <i>blue, green, red, yellow</i> )	67111/2/3/4	10.50
Miniature Toggle Switch ( <i>DPDT</i> )	67201	7.00
Miniature Toggle Switch ( <i>SPDT</i> )	67203	6.00
10 Position Resistive Rotary Switch	56100	105.00
Gear Cut Roller Micro Switch	67115	16.00
2009 Yamaha R1 Gear Position Adaptor ( <i>includes mating half</i> )	79120	79.00



**Handlebar Switch Gear**

MoTeC can supply a handlebar switch assembly which can be used to provide functions such as pit speed limiter, ECU map select and traction control on/off and up/down trim.

	Part No.	Price
Motorcycle Handlebar Switch Gear	79105	273.00

**Illumination**

	Part No.	Price
ADL2 Voltage Inverter ( <i>for backlit ADL2 only</i> )	61035	151.00
Dimmer Switch For Backlit SDL, ADL2, ADL3	61036	16.00

**Shift/Warning LEDs**

The SLM Shift Light Module features eight full-colour (RGB) LEDs. The lights can be used for Shift Lights, Warning Lights, or other indicators. Each LED is fully independent as to the purpose, colour, and brightness. The SLM works via CAN in conjunction with MoTeC M400/M600/M800/M880 ECUs, SDL and ADL2 Dash Loggers, and the ACL. An uncased OEM version is available for integration into your won steering wheel design.

	Part No.	Price
SLM Shift Light Module	18120	250.00
SLM OEM ( <i>uncased SLM for steering wheel integration</i> )	18121	231.00
7mm Panel Light ( <i>blue, green, red, yellow</i> )	67520/1/2/3	10.00
10mm Panel Light ( <i>green, red, yellow</i> )	67540/1/2	12.00
10mm Panel Light ( <i>tri-colour</i> )	67543	16.00
Multi-Coloured LED Array ( <i>low cost alternative to SLM</i> )	68007	16.00





Race smart.

## "Race smart." Clothing

RETAIL

JULY 2010

### "Race smart." Clothing

Part No.

Price

Get the MoTeC look with our eye-catching "Race smart." gear! The range includes a cap, polo shirt, and jacket. Images and more information can be seen on the website at [www.motec.com.au/aboutmerchandise/merchandiseoverview](http://www.motec.com.au/aboutmerchandise/merchandiseoverview). Please contact us to discuss sizing availability before placing your order

"Race smart" Cap	99512	10.00
"Race smart" Polo Shirt	See Table	25.00
"Race smart" Jacket	See Table	75.00

ITEM	SIZE					
	S	M	L	XL	2XL	3XL
Polo Shirt	99500	99501	99502	99503	99504	99505
Jacket	99506	99507	99508	99509	99510	99511

## Training & Support Services

### MoTeC Training Seminars

Duration

Price

MoTeC offer in-house product training seminars, covering the installation and set-up of Engine Management Systems, or Data Acquisition Systems. The seminars are held at MoTeC Europe in Adderbury, with course literature, lunch, and refreshments all provided. Please contact us to discuss your requirements further. Price quoted is per person.

MoTeC ECU Training	1 Day	150.00
MoTeC Data Acquisition and Analysis Training	1 Day	150.00

### Technical Field Support

Duration

Price

In addition to telephone support, MoTeC regularly supplies Technical Support Engineers for Track Support or on-site Tuning & Training. Contact us to enquire about booking a MoTeC Technical Support Engineer for assistance with set up and configuration of MoTeC products and systems.

MoTeC Field Support in the UK (exclusive of expenses)	1 Day	350.00
MoTeC Field Support in Europe (exclusive of expenses)	1 Day	400.00
MoTeC Field Support in R.O.W. (exclusive of expenses)	1 Day	450.00

### Repairs, Testing, & Upgrades

Price

If any of your MoTeC products require testing or repair, or require upgrade, **please contact us to obtain a Return Material Authorisation (RMA) number.** Repair costs for your unit depend on individual circumstances

#### Testing

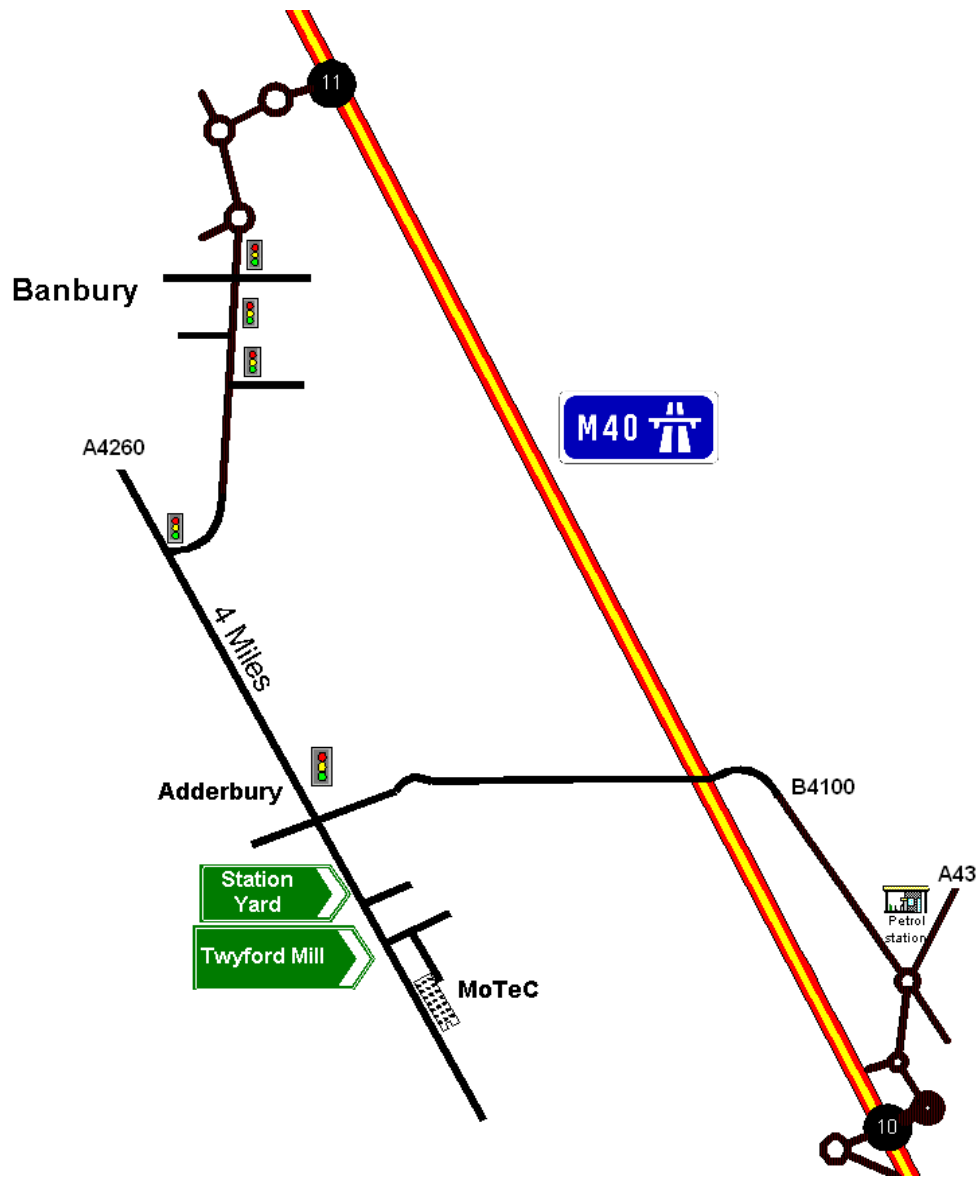
MoTeC Hardware Testing	30.00
Sensor Testing & Calibration (please contact us)	P.O.A.

#### Upgrades

ADL/ADL2 Backlight Conversion	P.O.A
SDL Backlight Conversion	P.O.A
MDD or PLM Firmware Upgrade	F.O.C.

[www.motec.com](http://www.motec.com)

### ***Where to find us***



### ***Directions***

Leave M40 at J10 and follow signs for A43 north. Take a left at the Esso garage onto B4100. Follow for 7 miles into Adderbury. At the traffic lights turn left past the Red Lion pub. Take the second left outside the village sign posted Twyford Mill

### ***Address***

MoTeC (Europe) Ltd  
Unit 14, Twyford Mill Ind. Est.  
Oxford Road  
Adderbury  
Oxon  
OX17 3SX